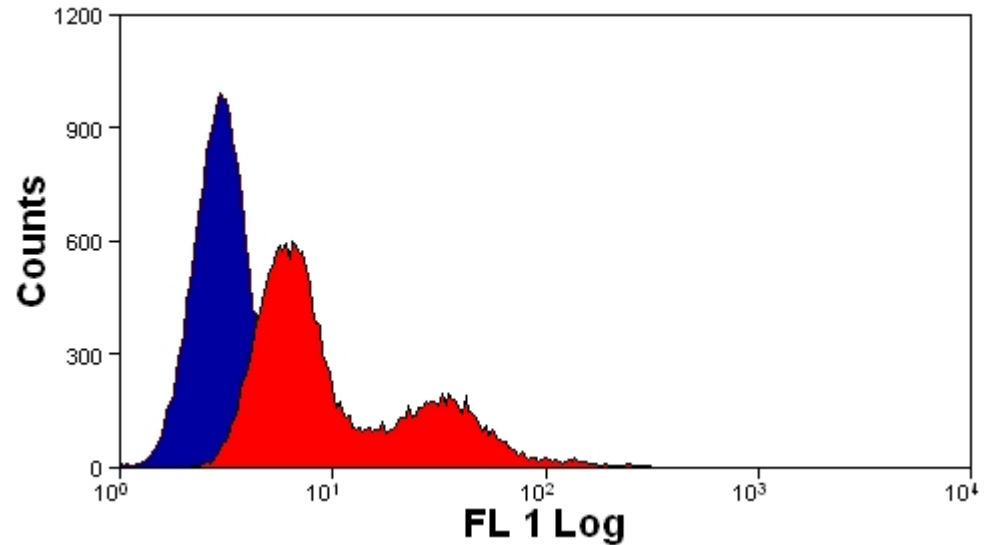
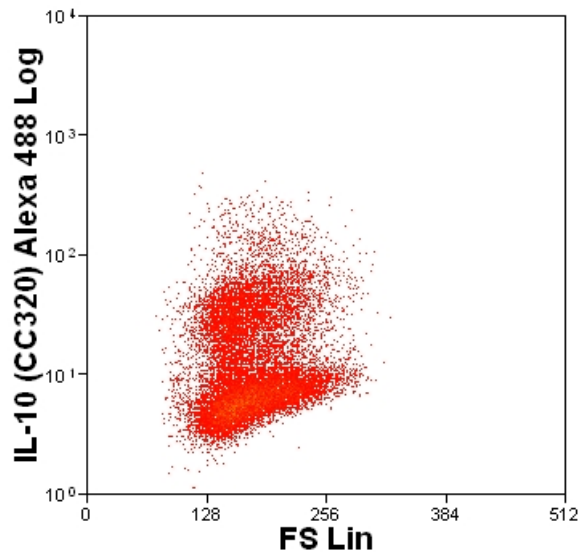


CHO UTF with CC320 (2 $\mu\text{g/ml}$ final)



CHO UTF (blue) and CHO IL-10⁺ (red) stained with CC320 (0.5 $\mu\text{g/ml}$ final)



CHO IL-10⁺ with CC320 (2 $\mu\text{g/ml}$ final)

Staining patterns of untransfected (blue) and ovine IL-10 transfected (red) CHO cells with MAb CC320 (anti-bovine IL-10, Serotec MCA2111). Final antibody concentration was 0.5 $\mu\text{g/ml}$ for 5×10^5 cells. Primary antibody binding was revealed with anti-mouse IgG Alexa 488 conjugate.