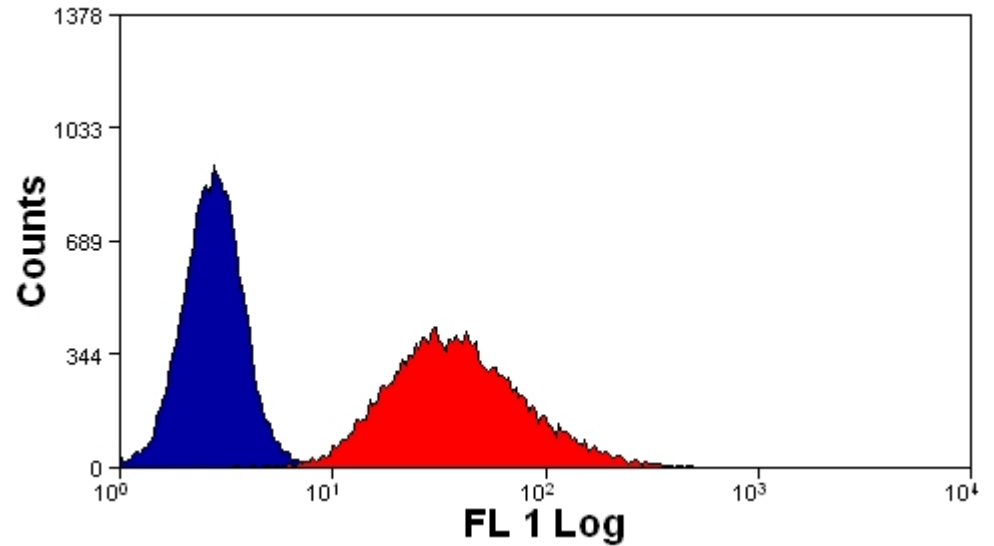
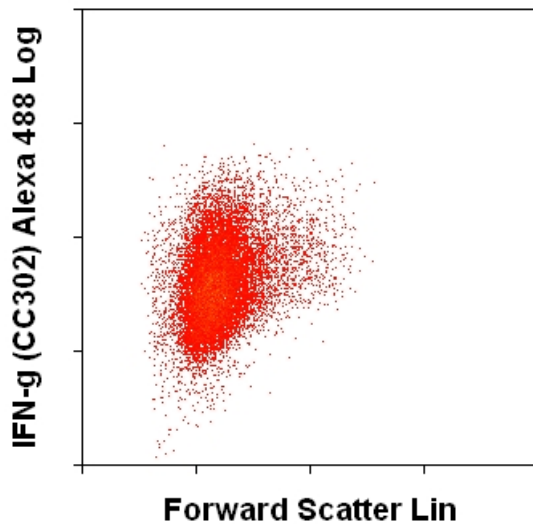


CHO UTF with CC302 (0.5  $\mu\text{g/ml}$  final)



CHO UTF (blue) and CHO IFN- $\gamma^+$  (red) stained with CC302 (0.5  $\mu\text{g/ml}$  final)



CHO IFN- $\gamma^+$  with CC302 (0.5  $\mu\text{g/ml}$  final)

Staining patterns of untransfected (blue) and ovine IFN- $\gamma$  transfected (red) CHO cells with MAbs CC302 (anti-bovine IFN- $\gamma$ ). Final antibody concentration was 0.5  $\mu\text{g/ml}$  for  $5 \times 10^5$  cells. Primary antibody binding was revealed with anti-mouse IgG Alexa 488 conjugate.