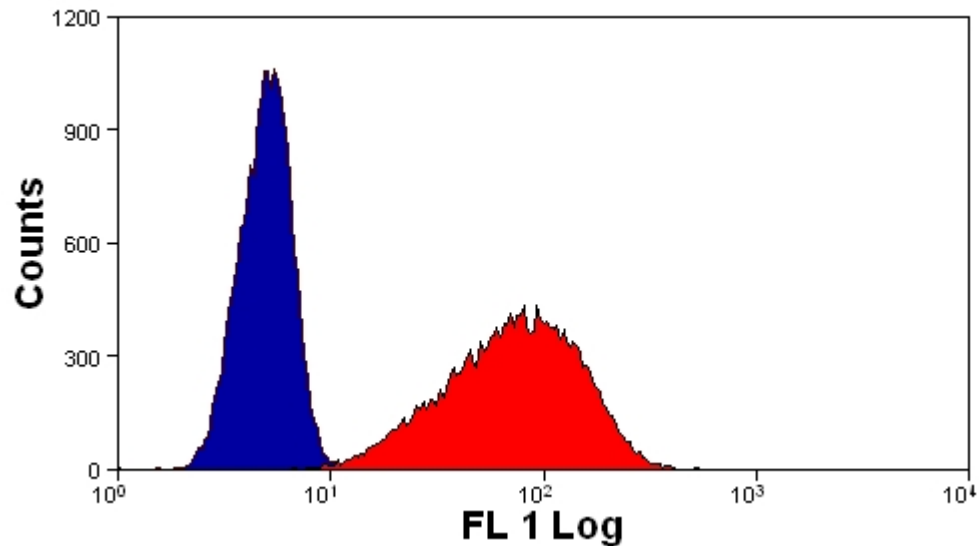
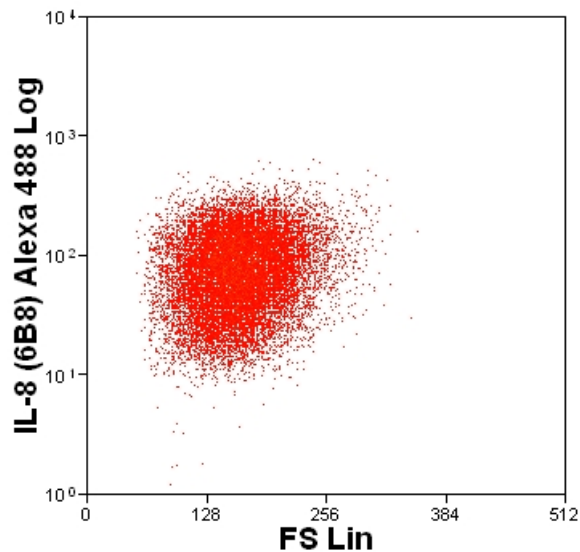


CHO UTF with 6B8 (1/8 final)



CHO UTF (blue) and CHO IL-8⁺ (CXCL8) (red) stained with 6B8 (1/8 final)



CHO IL-8⁺ (CXCL8) with 6B8 (1/8 final)

Staining patterns of untransfected (blue) and ovine IL-8 (CXCL8) transfected (red) CHO cells with MAb 6B8 (anti-ovine IL-8). Final antibody concentration was 1/8 for 5×10^5 cells. Primary antibody binding was revealed with anti-mouse IgG Alexa 488 conjugate.