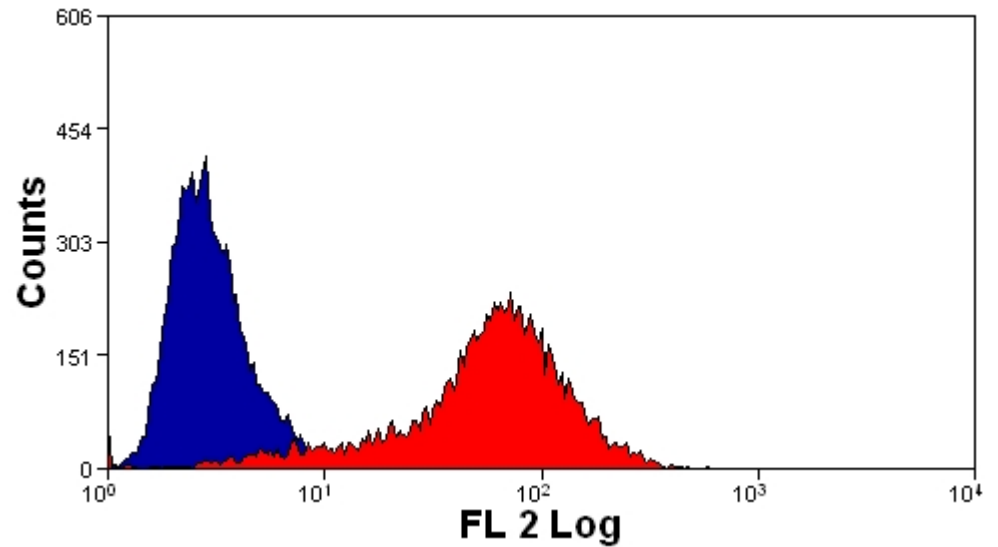
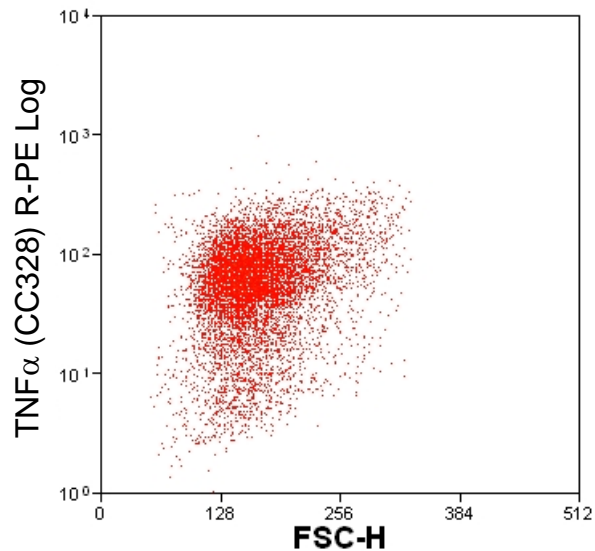


CHO UTF with CC328 (1/500 final)



CHO UTF (blue) and CHO TNF- $\alpha$ <sup>+</sup> (red) stained with CC328 (1/500 final)



CHO TNF- $\alpha$ <sup>+</sup> with CC328 (1/500 final)

Staining patterns of untransfected (blue) and ovine TNF- $\alpha$  transfected (red) CHO cells with MAb CC328 (anti-bovine TNF- $\alpha$ , Serotec MCA2335). Final antibody concentration was 1/500 for  $5 \times 10^5$  cells. Primary antibody binding was revealed with anti-mouse IgG R-PE conjugate.